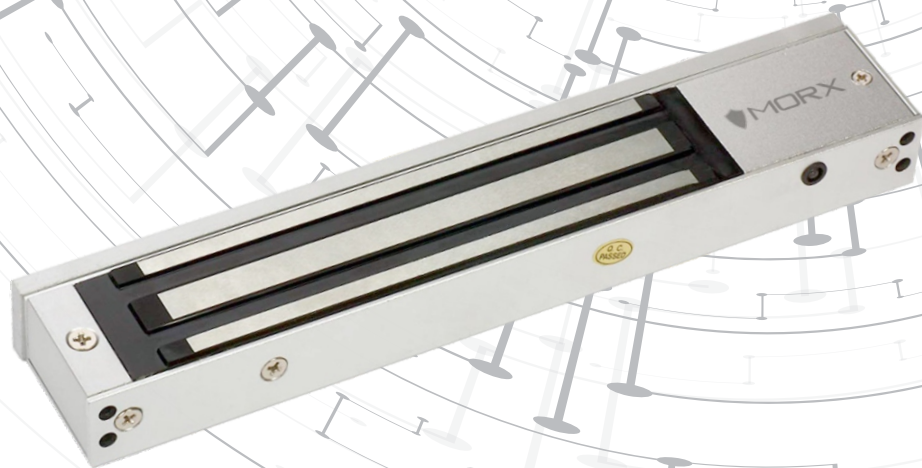




MIVANTA
The MANTRA Initiative

Electromagnetic Lock

Single Leaf-600lbs



Key Features

- ◆ Fail-Safe: unlocks when power is braked
- ◆ Red LED indication for lock status
- ◆ Easy installation: suitable for both new and retrofit usage
- ◆ Silent operation: no humming or buzzing
- ◆ 2 Years Mivanta Warranty

Specifications

Holding Force	250~280kg / 600lbs
Voltage	12Vdc
Current	450mA
Operating Temperature	-10 to 55 Degrees
Operating Humidity	0-90%
Finishing	Zinc
Suitable for	Wooden door, Glass door, Aluminium door
Dimension	250L*42W*25H mm
Armature Plate	180L*36W*10H mm